

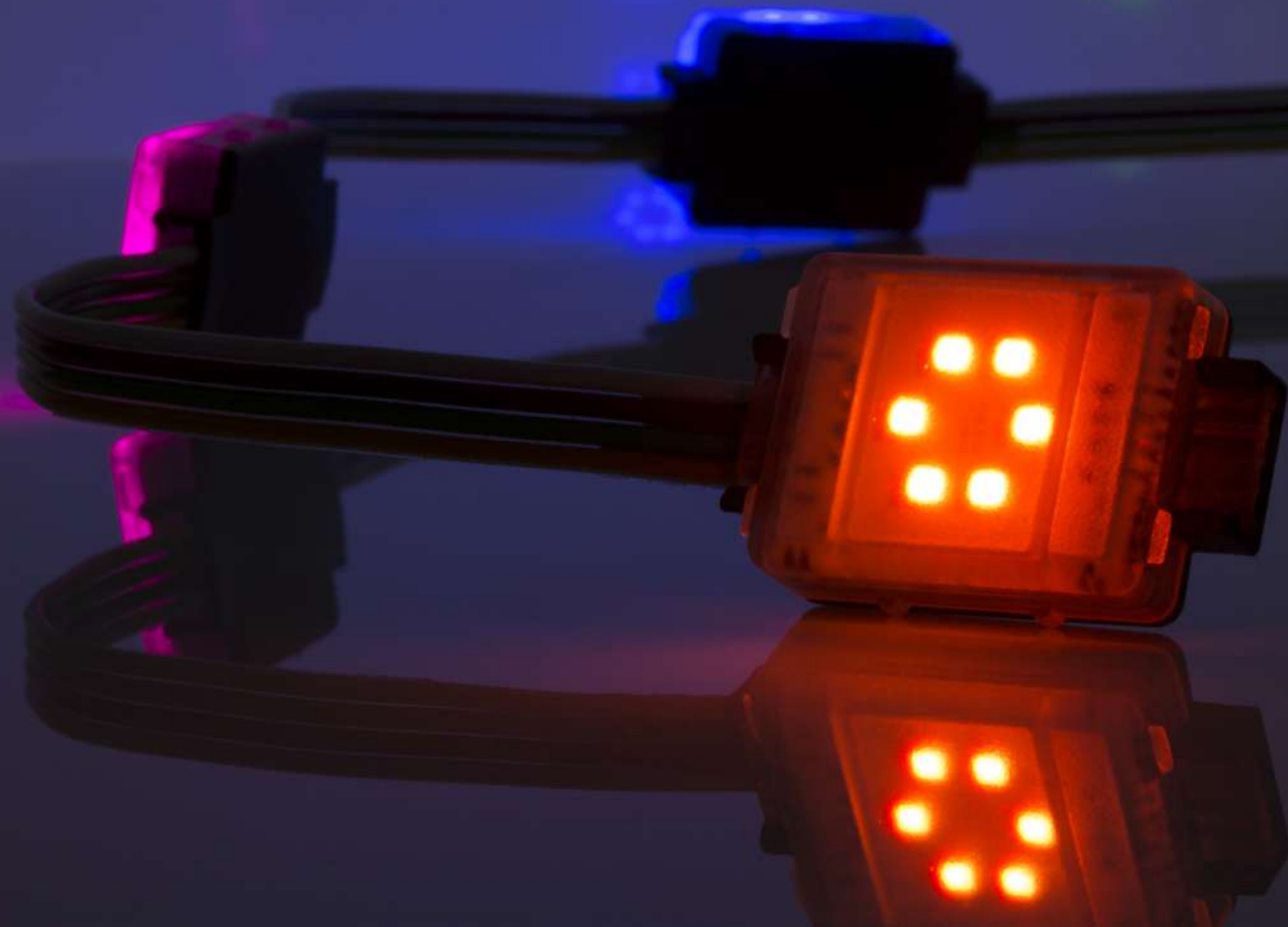
IntiDOT

INTILED

## IntiDOT SPECIFIC DESCRIPTION

I N T I L E D

Installation-friendly media facade system  
with high-brightness dots and flexible  
adjusting possibilities



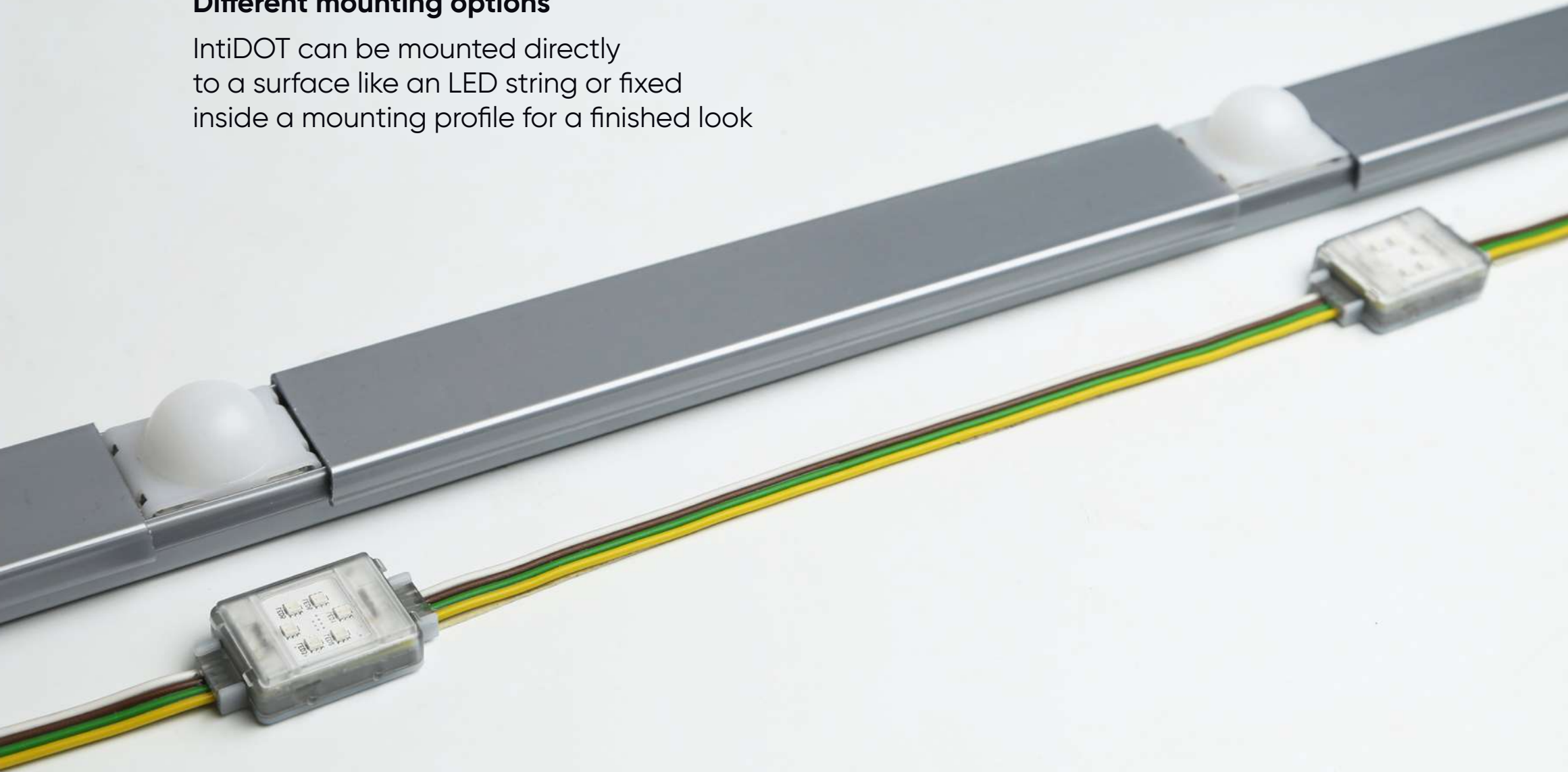
### **Additional diffuser lenses**

Additional polycarbonate diffusers with UV stabilizer increase the viewing angle up to 180°



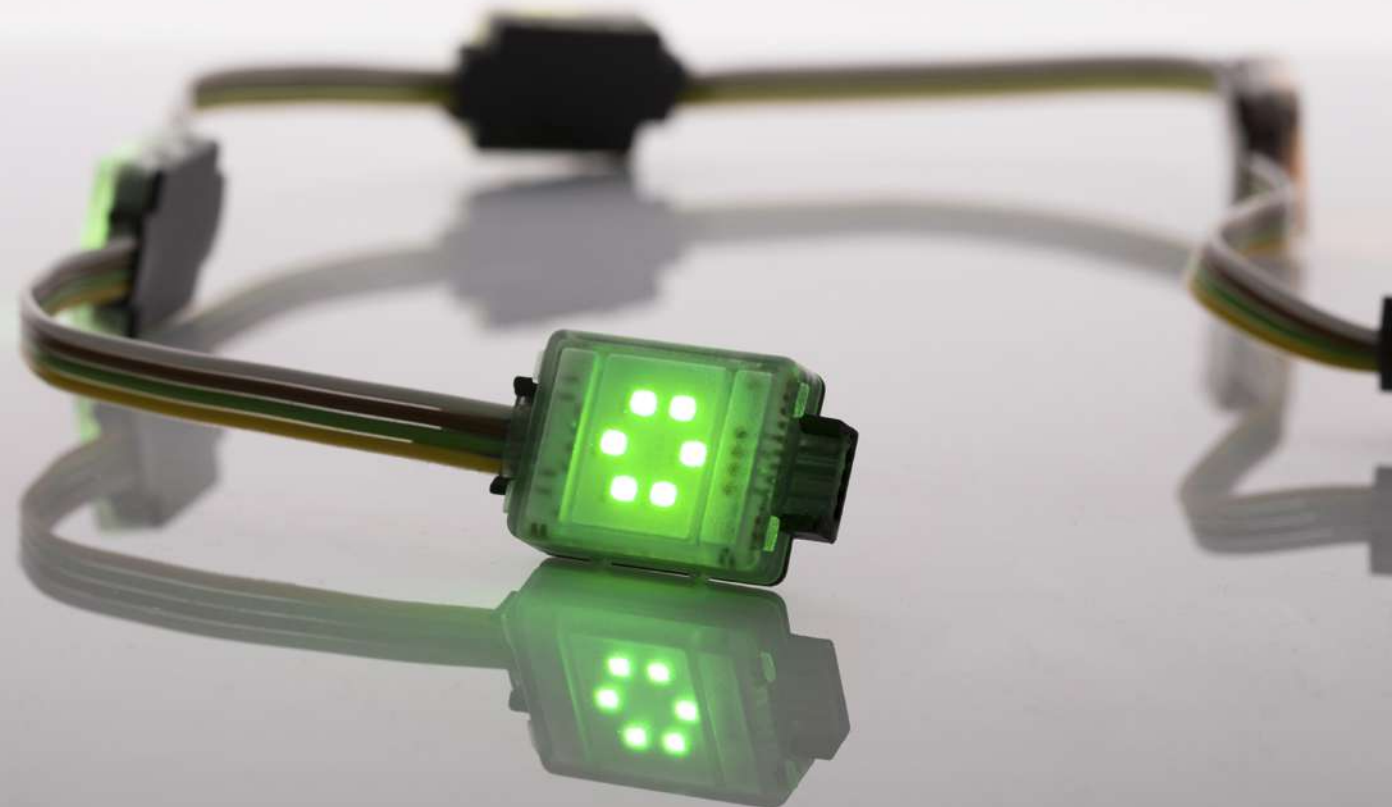
### Different mounting options

IntiDOT can be mounted directly to a surface like an LED string or fixed inside a mounting profile for a finished look



### **DMX-512 controlled**

Each pixel is controlled individually according to the standard protocol DMX-512. The system can be used both independently and together with other DMX controlled luminaires (e.g. projectors, linear fixtures)



### Long service life

IP65 rating (IP67 for driver) ensures a long service life (at least 50,000 hours) in wide temperature ranges from  $-40^{\circ}\text{C}$  to  $+45^{\circ}\text{C}$



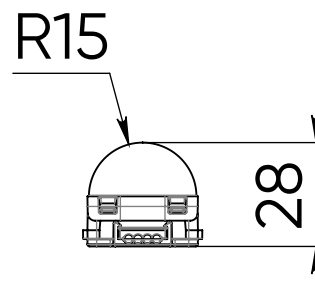
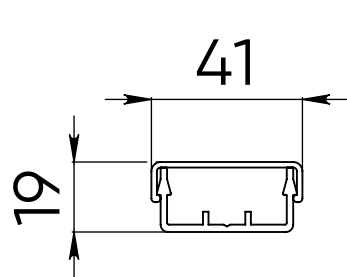
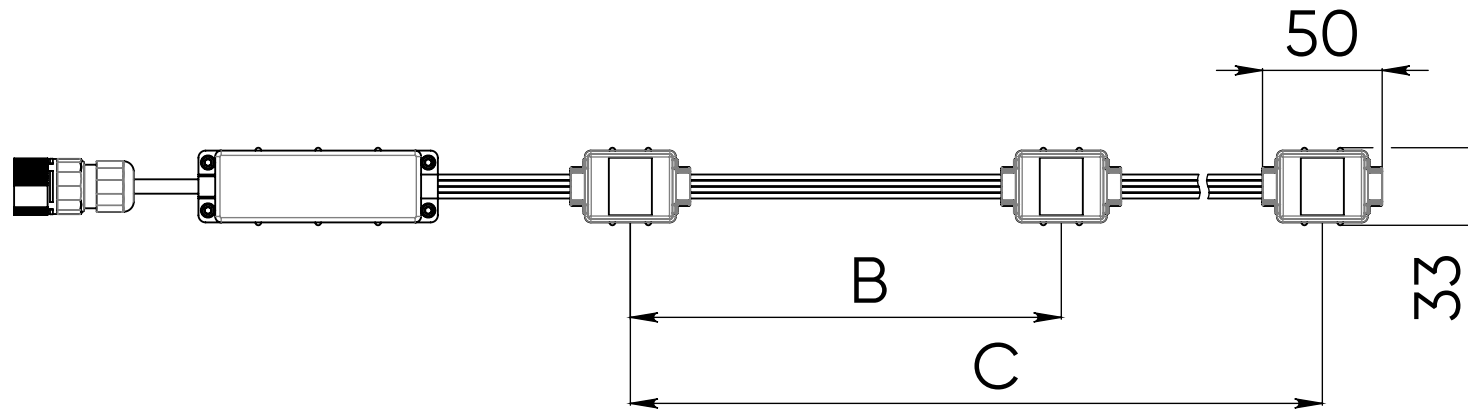
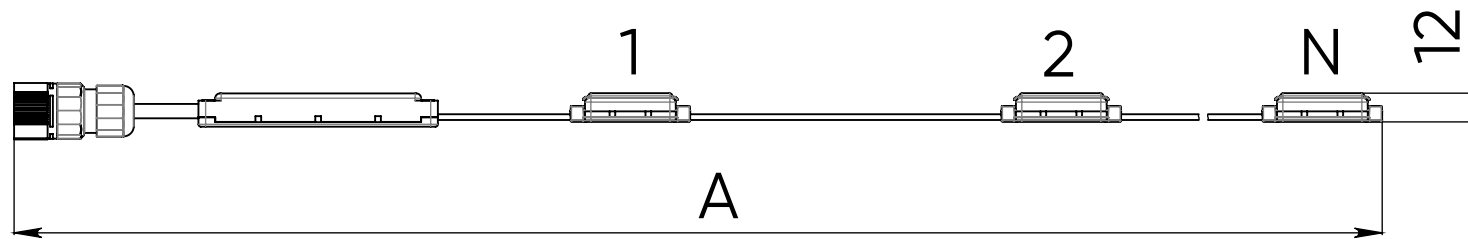
## IntiDOT MAIN TECHNICAL CHARACTERISTICS

I N T I L E D

Light source	Nichia (Japan) fullcolor LEDs
Light color	fullcolor
Luminous flux (1 dot / 50 dots)	without lens: 48 lm / 2400 lm with lens: 36 lm / 1800 lm
Wattage (1 dot / 50 dots)	2 Bt / 81 Bt
Voltage	24 V DC
Protection class	IP65
Operating temperature	tropical edition: -40°C ... +55°C standard edition: -40°C ... +45°C
Lifespan	no less than 50000 hours
Control	DMX-512
Dimensions (1 dot)	50x30x12 mm
Weight (50 dots with 200 mm step)	1,5 kg
Mounting	surface mounting or profile mounting
Customization	customized distance between dots and number of dots in a string; monochrome controlled version

# IntiDOT DIMENSIONAL DRAWING

I N T I L E D

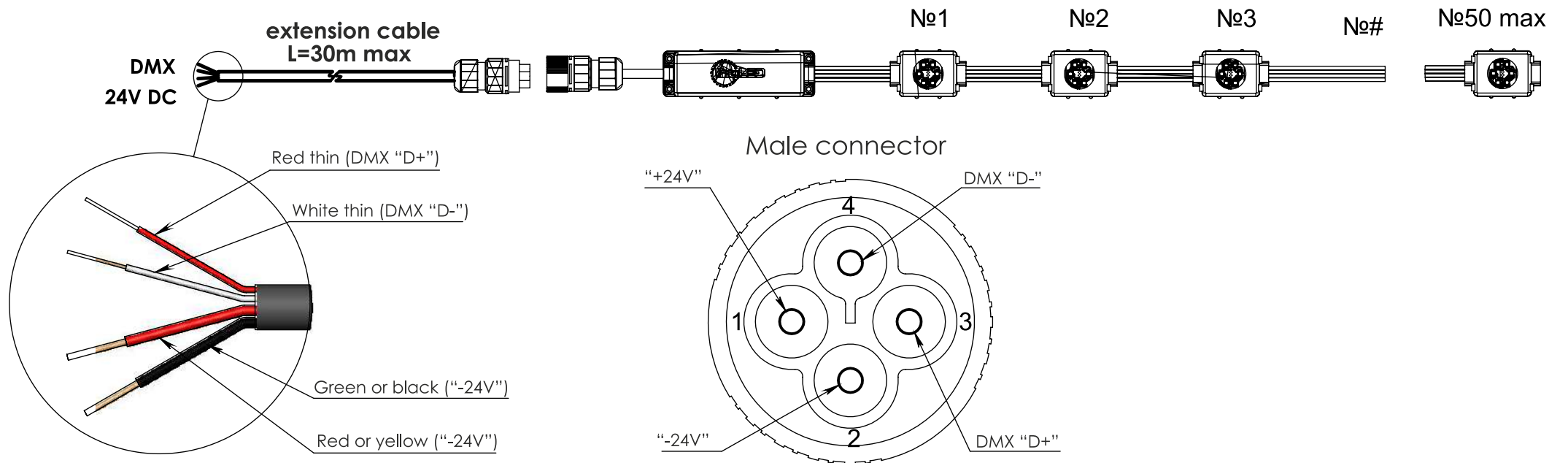


	min	max
N	1	50
A	250	25250
B	150	500
C	150	25000



# IntiDOT CONNECTIONS DIAGRAM

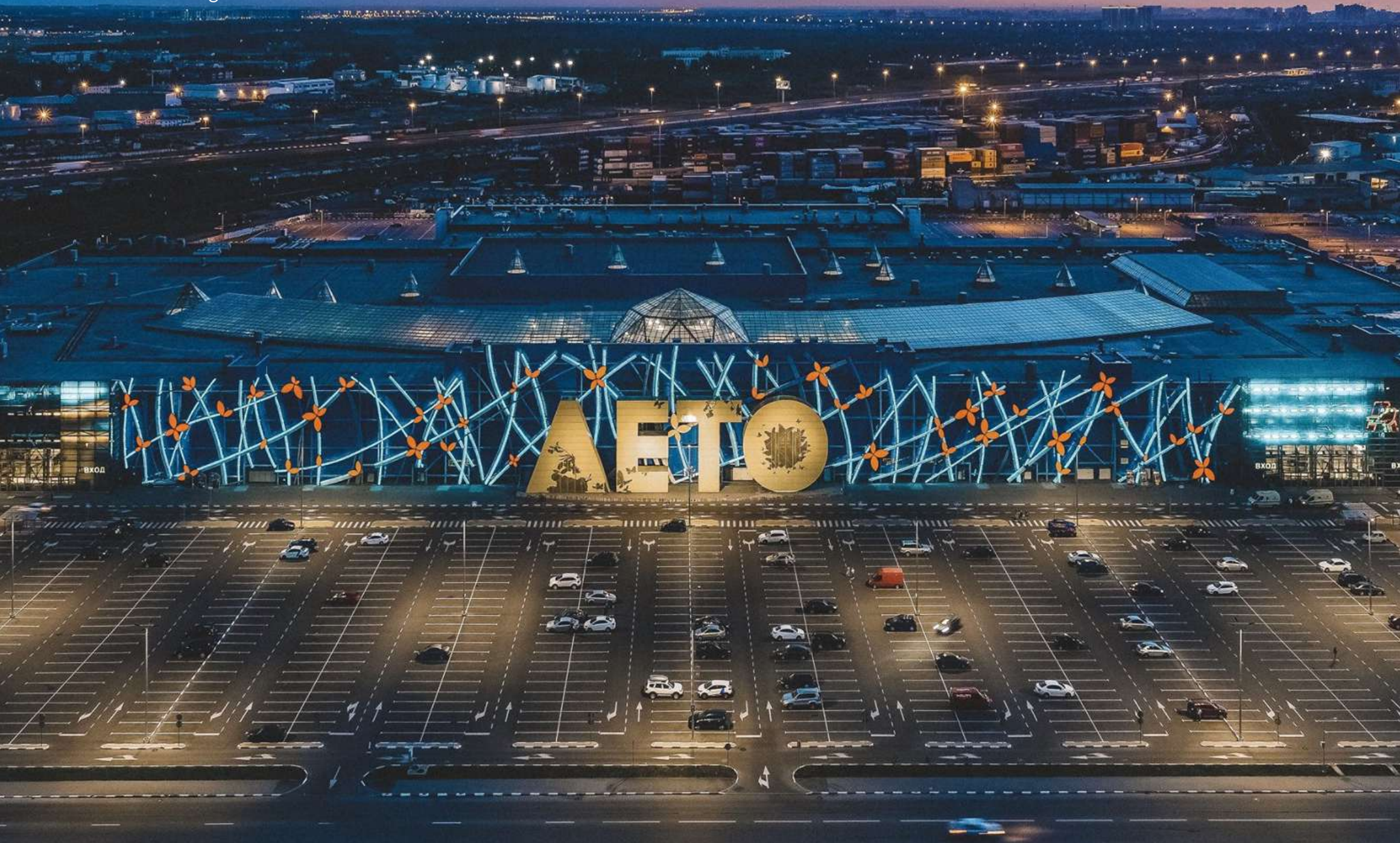
I N T I L E D



# PORTFOLIO

INTILED

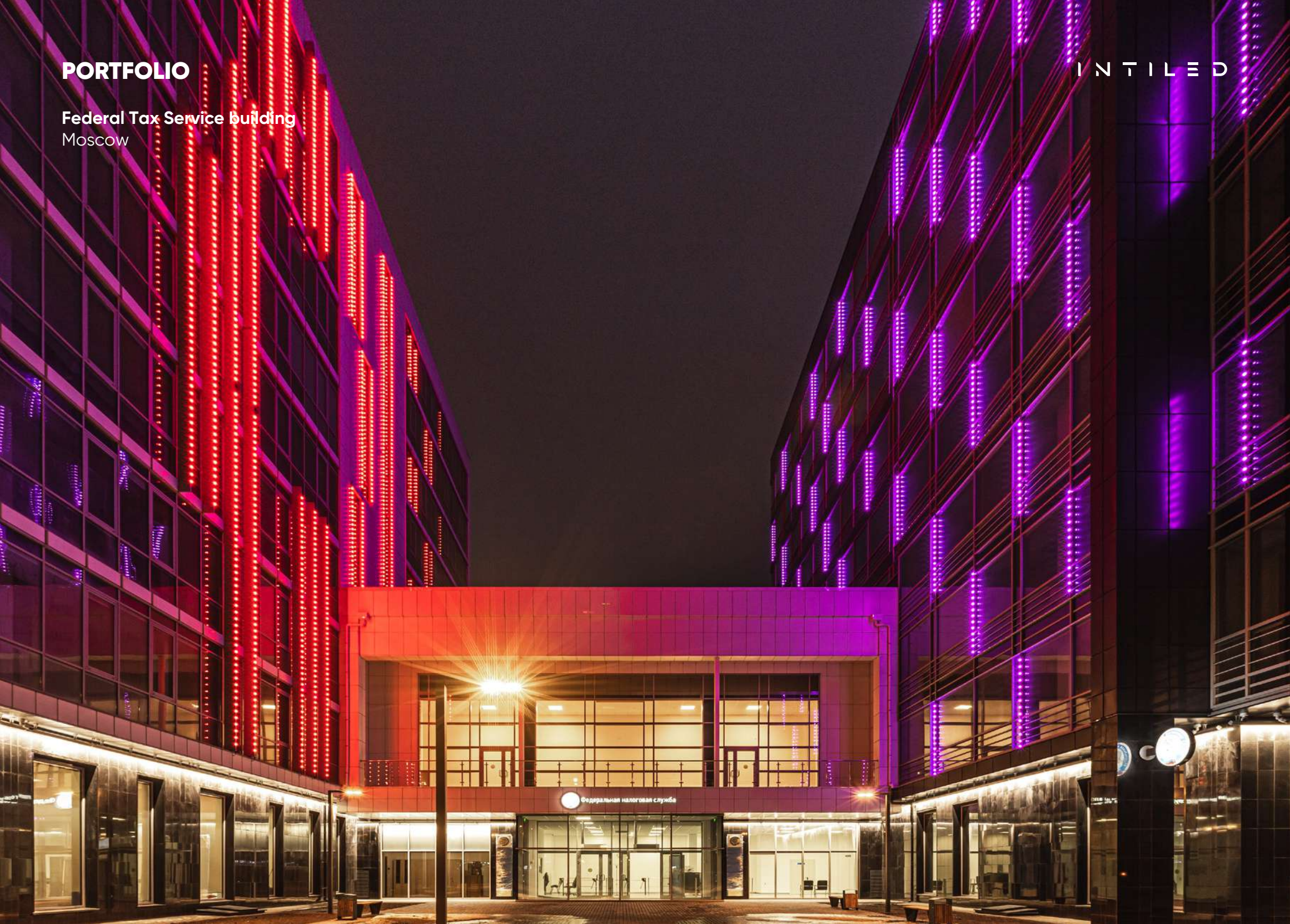
"LETO" Shopping Mall  
Saint-Petersburg



# PORTFOLIO

Federal Tax Service building  
Moscow

INTILED





more information available  
on the website